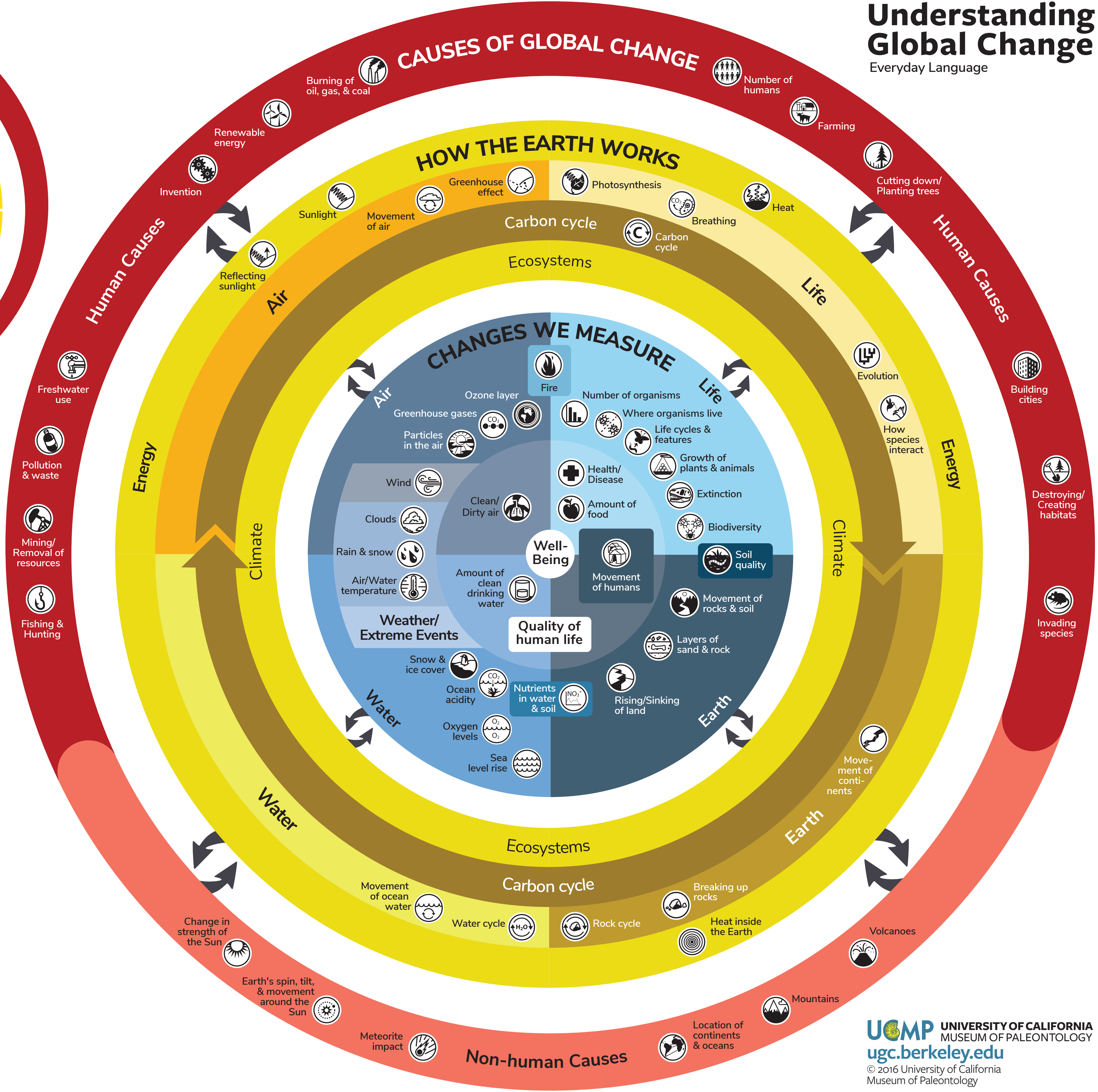
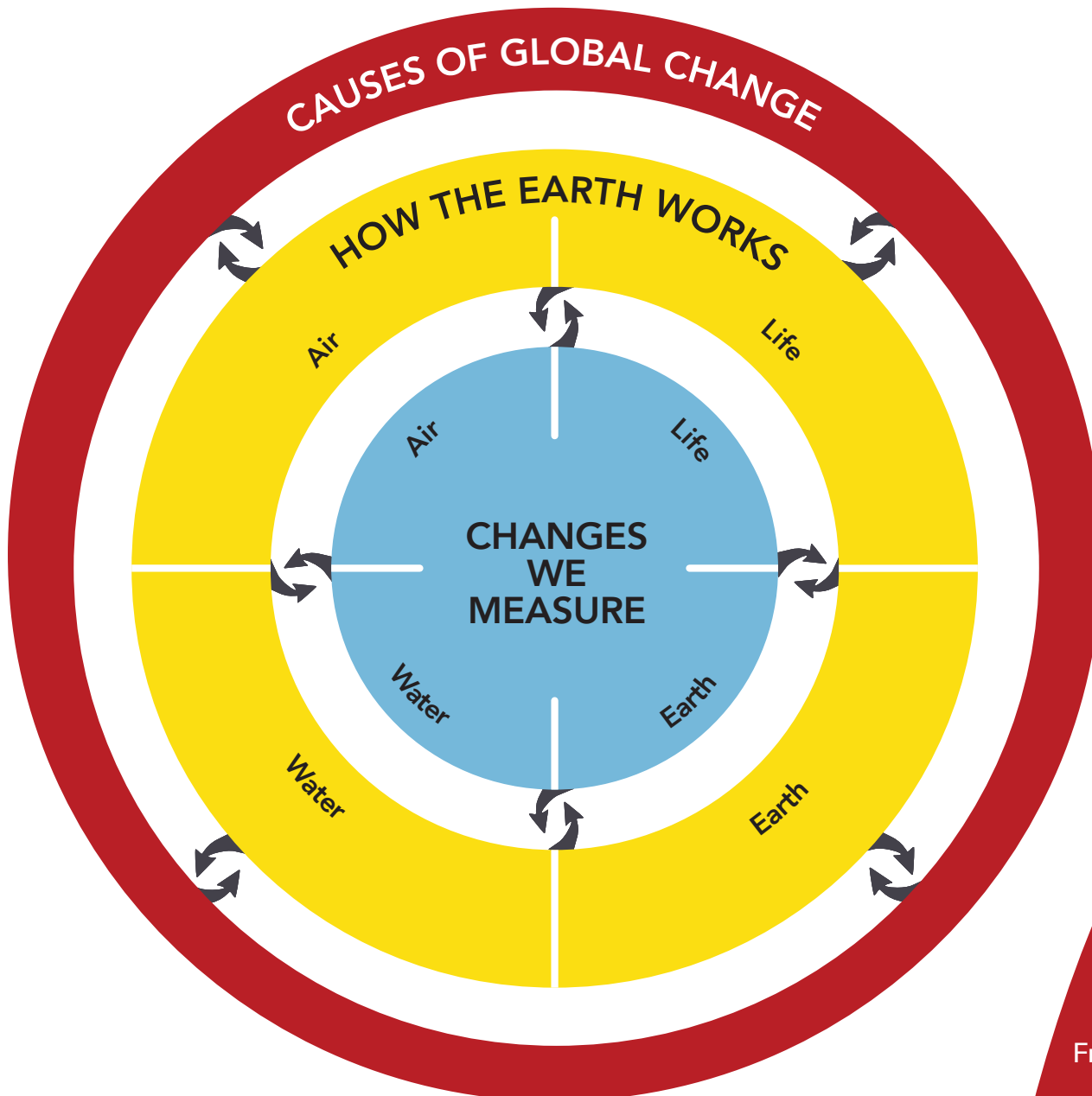


Understanding Global Change

Everyday Language



This diagram has three parts:

CAUSES OF GLOBAL CHANGE
Human activities and non-human factors that affect How the Earth Works.

HOW THE EARTH WORKS
Processes happening all the time on Earth.

CHANGES WE MEASURE
The evidence for global changes through time. Non-human causes of change tend to happen over long timescales (thousands to millions of years), while humans are causing major changes to the Earth system we can measure over relatively short timescales (decades, years, or less).