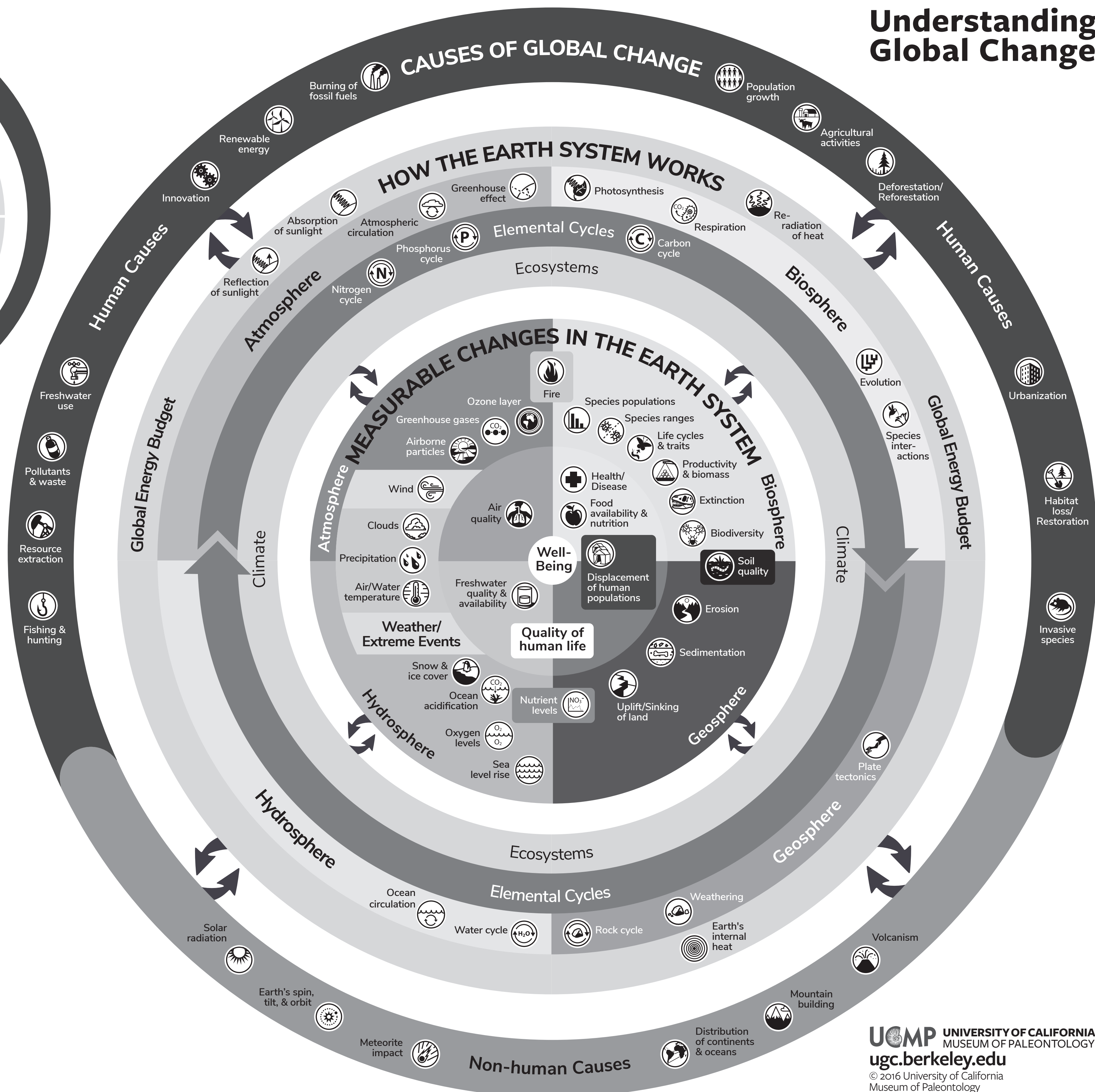
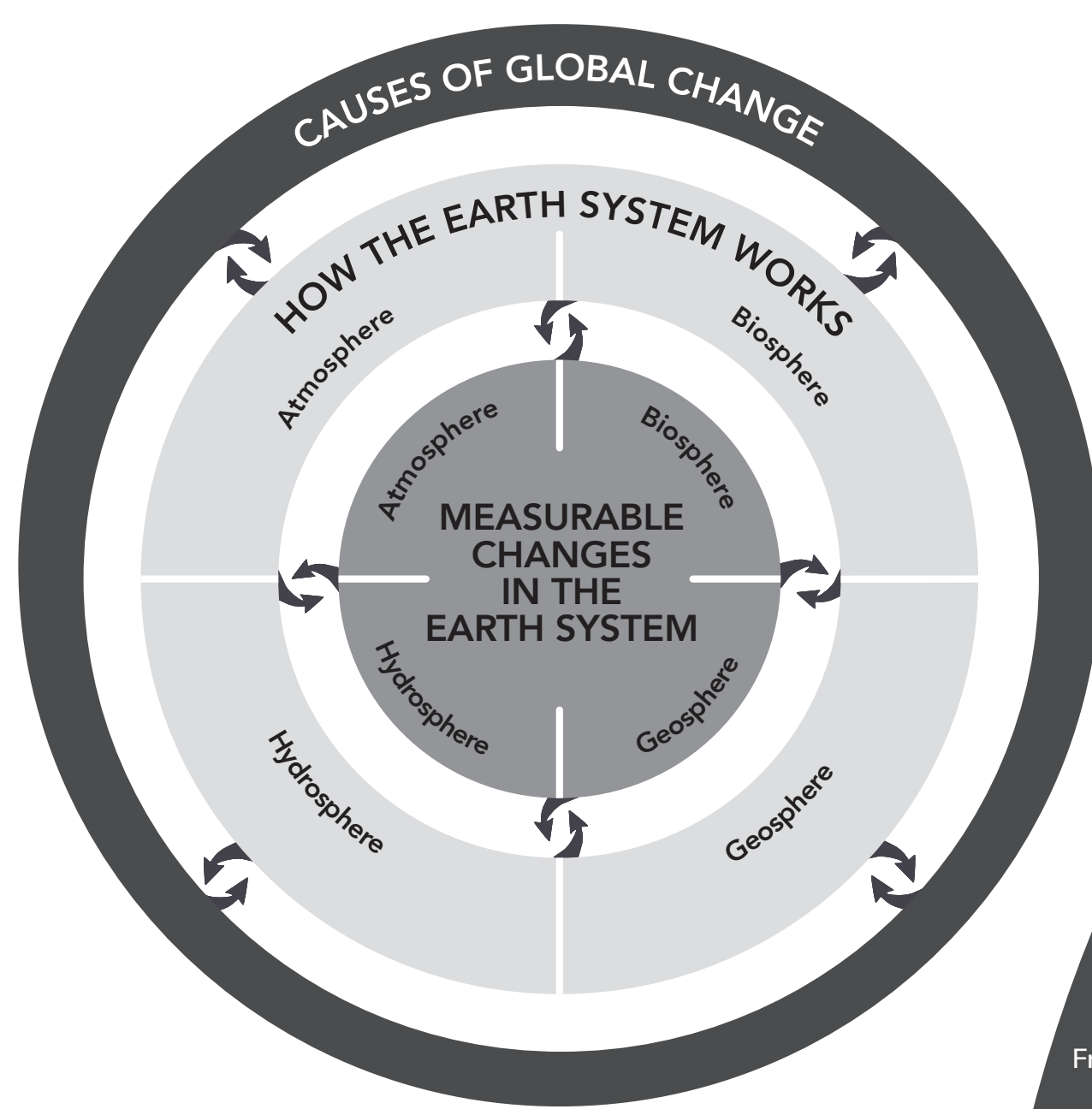


Understanding Global Change



This diagram has three components:

CAUSES OF GLOBAL CHANGE
Human activities and non-human factors that affect Earth system processes.

EARTH SYSTEM PROCESSES
Ongoing processes that shape the Earth through time.

MEASURABLE CHANGES
The evidence for global changes through time. Non-human causes of change tend to operate over long timescales (thousands to millions of years), while humans are causing major disruptions to the Earth system we can measure over relatively short timescales (decades, years, or less).